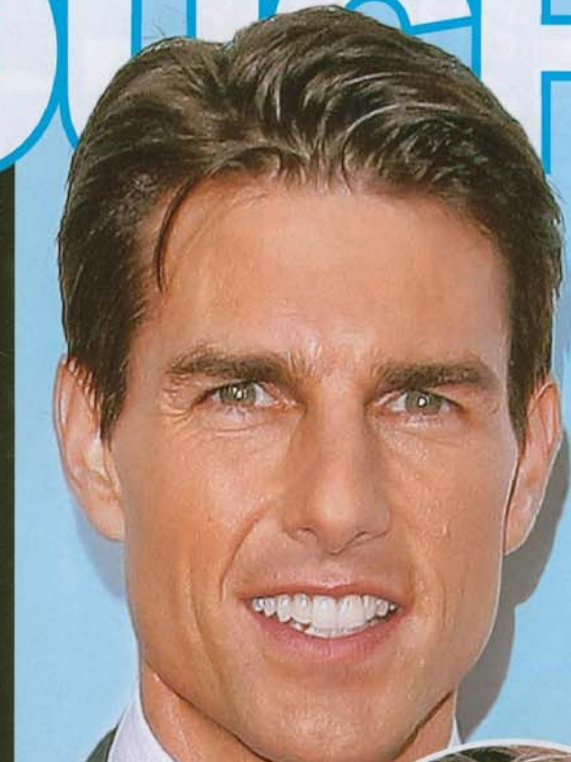


WEEKLY

# INTOUCH



**JOHN'S HEARTBREAK**  
HE OPENS UP ABOUT HIS SON'S SUDDEN DEATH



**IT'S TWIN GIRLS FOR REBECCA!**



**EXCLUSIVE**

**WHO'S HAD**

# PLASTIC SURGERY

**WHO'S NATURAL**



**J. LO'S LAST CHANCE TO SAVE HER MARRIAGE**

**ANGELINA, TOM AND OTHER STARS ARE LOOKING YEARS YOUNGER. WHAT'S THEIR SECRET?**

#BXNDQHB \*\*\*\*\*AUTOM5-DIGIT 90036  
#90036LFL913SR005# 070609 INTC 320 40677

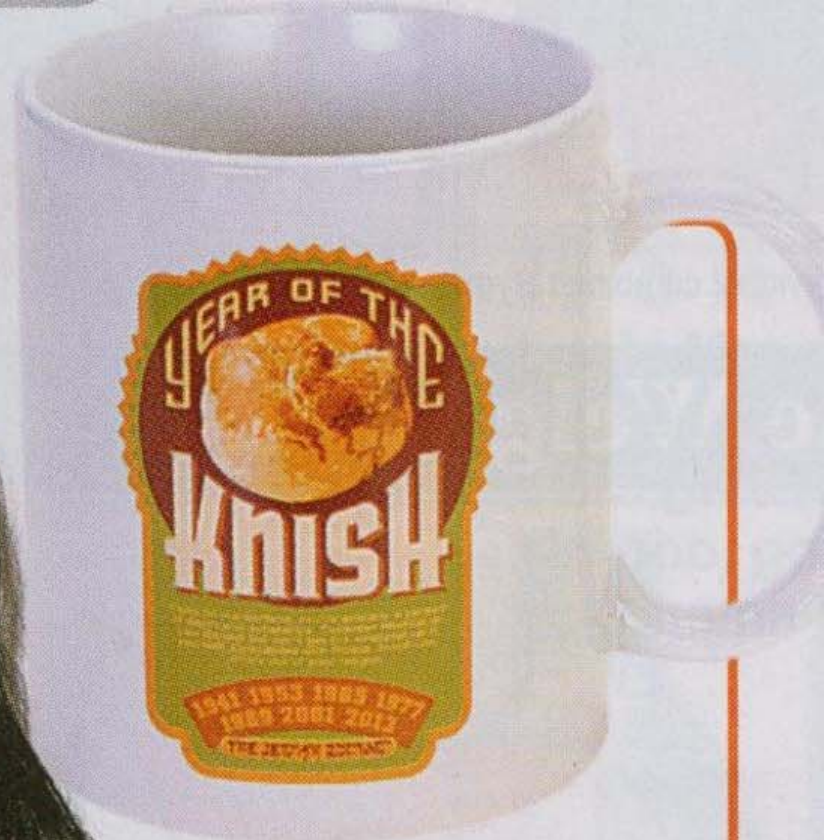


LINDSAY LEFLER P0039  
DISTINCTIVE ASSETS 00013  
913 S MANSFIELD AVE  
LOS ANGELES CA 90036-4921

IN TOUCH 03 • JANUARY 19, 2009



SARAH  
SILVERMAN



## What's your sign?

Tinseltown comedians such as **Sarah Silverman**, **Jerry Seinfeld** and **Jon Stewart** are getting a chuckle from The Jewish Zodiac's clever parody of the Chinese zodiac, which uses traditional deli foods instead of animals to represent your "sign" and puts them on retro-style T-shirts, place mats, kitchen magnets and coffee mugs. According to the brand, babies born in 2009 will belong to the Year of the Pickle! \$5-\$25, [jewzo.com](http://jewzo.com).